

Integrated Control Unit

Input Test

Remove the left kick panel cover and under-dash fuse/relay box, then disconnect the 22-P connector from the integrated control unit.

Remove the integrated control unit from the under-dash fuse/relay box.

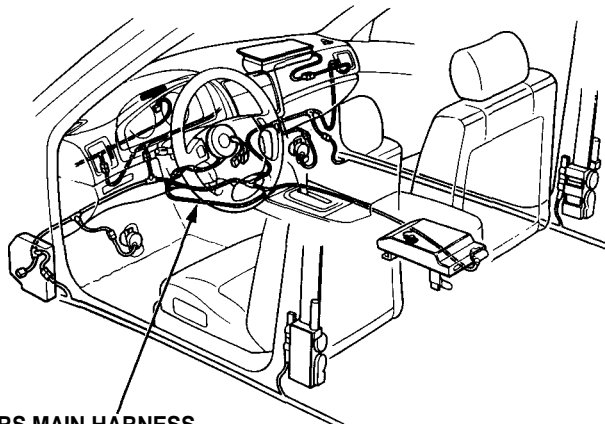
Inspect the connector and socket terminals to be sure they are all making good contact.

- If the terminals are bent, loose or corroded, repair them as necessary, and recheck the system.
- If the terminals look OK, make the following input tests at the connector and the under-dash fuse/relay box.
 - If any test indicates a problem, find and correct the cause, then recheck the system.
 - If all the input tests prove OK, the control unit must be faulty; replace it.

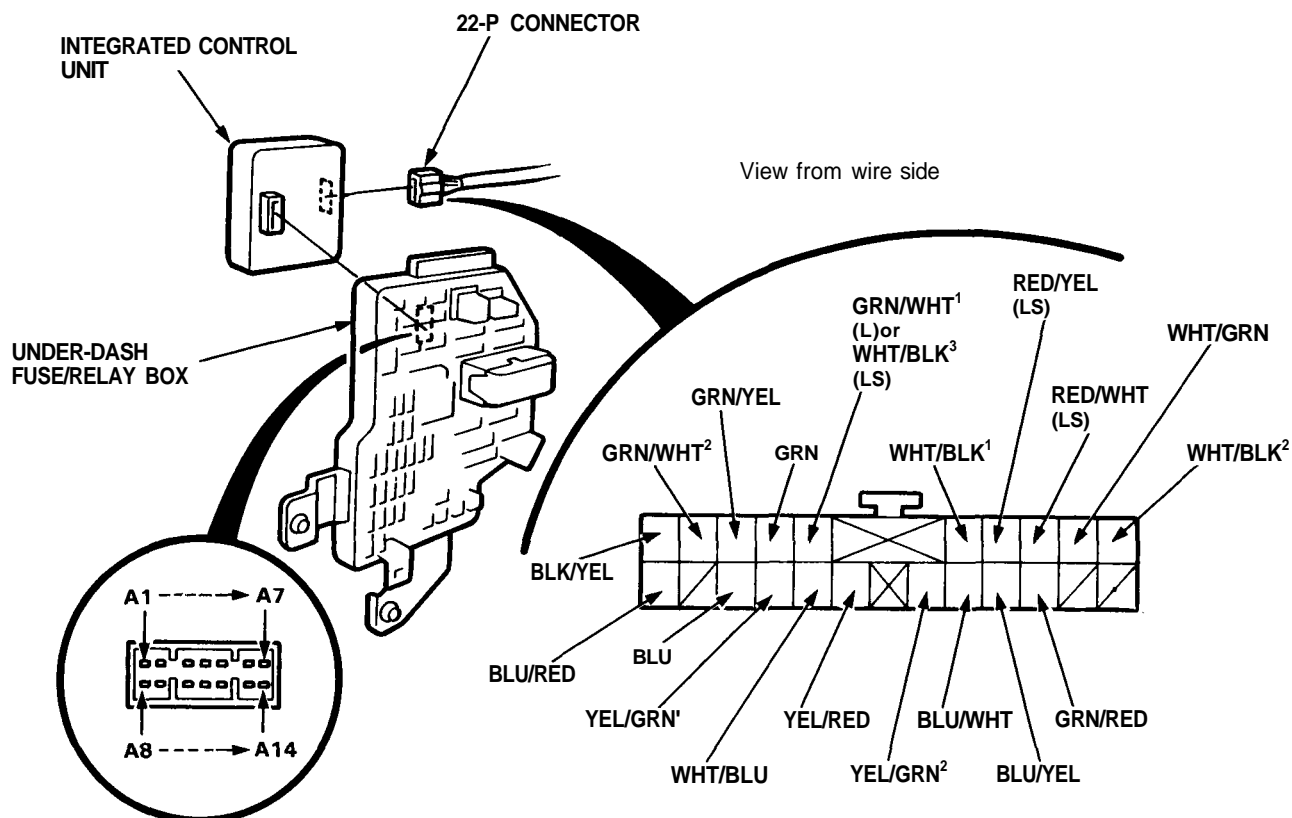
NOTE: Different wires with the same color have been given a number suffix to distinguish them (for example, WHT/BLK¹ and WHT/BLK² are not the same).

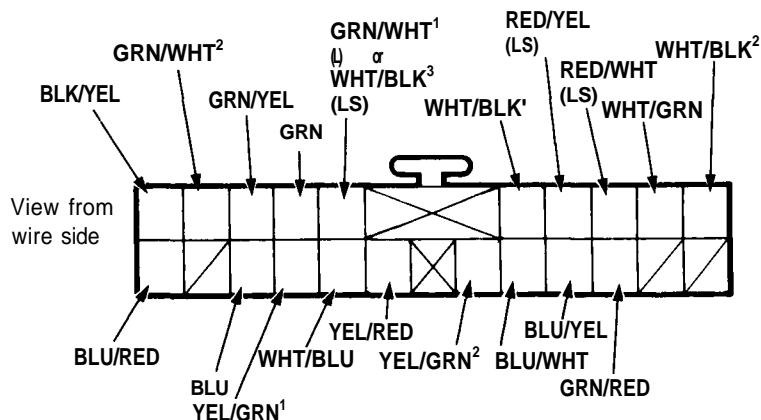
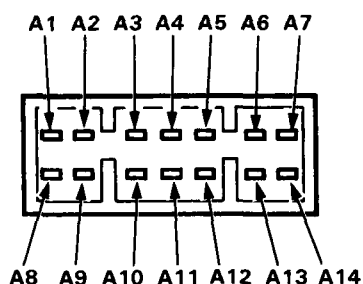
CAUTION:

- All SRS wiring harnesses are covered with yellow outer insulation.
- Before disconnecting any part of the SRS wire harness, install the short connectors (see page 23-409).
- Replace the entire affected SRS harness assembly if it has an open circuit or damaged wiring.



SRS MAIN HARNESS
(Covered with yellow outer insulation)





All Systems:

No.	Terminal	Test condition	Test: Desired result	Possible cause if result is not obtained
1	A7	Under all conditions	Check for continuity to ground: There should be continuity.	<ul style="list-style-type: none"> Poor ground (G301, G302, G303) An open in the wire
2	A14	Under all conditions	Check for voltage to ground: There should be battery voltage.	<ul style="list-style-type: none"> Blown No. 56 (7.5 A) fuse An open in the wire
3	A2	Ignition switch ON (II)	Check for voltage to ground: There should be battery voltage.	<ul style="list-style-type: none"> Blown bulb or No. 13 (7.5 A) fuse An open in the wire

Key-in Reminder System:

No.	Terminal /Wire	Test condition	Test: Desired result	Possible cause if result is not obtained
1	A11	Driver's door open	Check for continuity to ground: There should be continuity. NOTE: Before testing, remove No. 57 (15 A) fuse.	<ul style="list-style-type: none"> Faulty driver's door switch An open in the wire
2	BLU/WHT	Ignition key inserted all the way into the ignition switch	Check for voltage to ground: There should be 1 V or less.	<ul style="list-style-type: none"> Faulty ignition key switch Poor ground (G301, G302, G303) An open in the wire

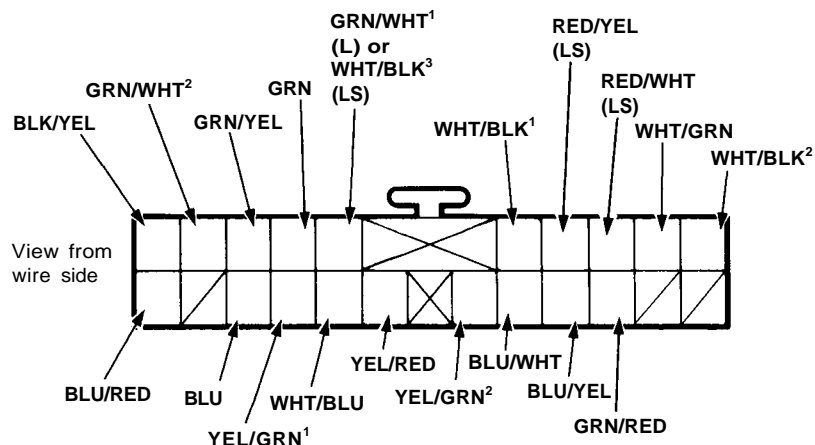
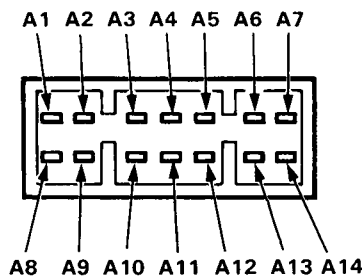
Lights-on Reminder System:

No.	Terminal /Wire	Test condition	Test: Desired result	Possible cause if result is not obtained
1	A11	Driver's door open	Check for continuity to ground: There should be continuity. NOTE: Before testing, remove No. 57 (15 A) fuse.	<ul style="list-style-type: none"> Faulty driver's door switch An open in the wire
2	A6	Combination light switch ON (II)	Check for voltage to ground: There should be battery voltage.	<ul style="list-style-type: none"> Blown No. 49 (15 A) fuse Faulty combination light switch Faulty taillight relay An open in the wire
3	BLU	Connect the A14 terminal to the BLU terminal.	Check chime operation: Chime should sound each time the battery is connected.	<ul style="list-style-type: none"> Faulty chime An open in the wire

(cont'd)

Integrated Control Unit

Input Test (cont'd)



Seat Belt Reminder System:

No.	Wire	Test condition	Test: Desired result	Possible cause if result is not obtained
1	BLU/YEL	Ignition switch ON (II) and driver's seat belt not buckled	Check for voltage to ground: There should be 1 V or less.	<ul style="list-style-type: none"> Faulty driver's seat belt switch Poor ground (G301, G302, G303) An open in the wire

Rear Window Defogger Timer System:

No.	Wire/ Terminal	Test condition	Test: Desired result	Possible cause if result is not obtained
1	YEL/GRN²	Defogger switch pushed	Check for continuity to ground: There should be continuity as the switch is pushed.	<ul style="list-style-type: none"> Faulty defogger switch Poor ground (G301, G302, G303) An open in the wire
2	A5	Ignition switch ON (II)	Attach to ground: Rear window defogger should work and the defogger switch indicator light should come on.	<ul style="list-style-type: none"> Blown No. 3 (15 A) fuse Faulty defogger relay Blown bulb An open in the wire

Engine Oil Pressure Indicator System:

No	Wire	Test condition	Test: Desired result	Possible cause if result is not obtained
1	WHT/BLU	Engine running	Check for voltage to ground: There should be battery voltage.	<ul style="list-style-type: none"> Faulty charging system An open in the wire
2	YEL/RED	Ignition switch OFF	Check for continuity to ground: There should be continuity.	<ul style="list-style-type: none"> Faulty engine oil pressure switch An open in the wire
		Ignition switch ON (II)	Check indicator light operation. If the light does not come on, attach the YEL/RED terminal to ground: The light should come on as the ignition switch is turned ON (II).	<ul style="list-style-type: none"> Blown bulb An open in the wire
		Start the engine.	Check for voltage to ground: There should be battery voltage.	<ul style="list-style-type: none"> Insufficient oil Improper lubrication Faulty engine oil pressure switch



Side Marker Light Flasher System:

No.	Terminal	Test condition	Test: Desired result	Possible cause if result is not obtained
1	A6	Combination light switch to ON	Check for voltage to ground: There should be battery voltage.	<ul style="list-style-type: none"> • Blown No. 49 (15 A) fuse • Faulty combination light switch • Faulty taillight relay • An open in the wire
2	A12	Ignition switch ON (II) and turn signal switch in left position	Check for voltage to ground: If should change from 0V – 12V – 0V repeatedly.	<ul style="list-style-type: none"> • Blown No. 13 (7.5 A) fuse • Faulty turn signal/hazard relay • An open in the wire
3	A13	Ignition switch ON (II) and turn signal switch in right position		
4	A1 A8	Connect the A14 terminal to the A1 (or A8) terminal.	Check the front side marker lights: The left (or right) front side marker light should come on as power and ground are connected.	<ul style="list-style-type: none"> • Blown bulb • Poor ground (G152 or G153) • An open in the wire

Power Window Key-off Timer System:

No.	Terminal /Wire	Test condition	Test: Desired result	Possible cause if result is not obtained
1	A11	Driver's door open	Check for continuity to ground: There should be continuity. NOTE: Before testing, remove No. 57 (15A) fuse.	<ul style="list-style-type: none"> • Faulty door switch • An open in the wire
	GRN/RED	Passenger's door open		
2	A4	Connect the A14 terminal to the A4 terminal.	Check window operation: The power windows should work with key OFF.	<ul style="list-style-type: none"> • Faulty power window relay • Poor ground (G301, G302, G303) • An open in the wire

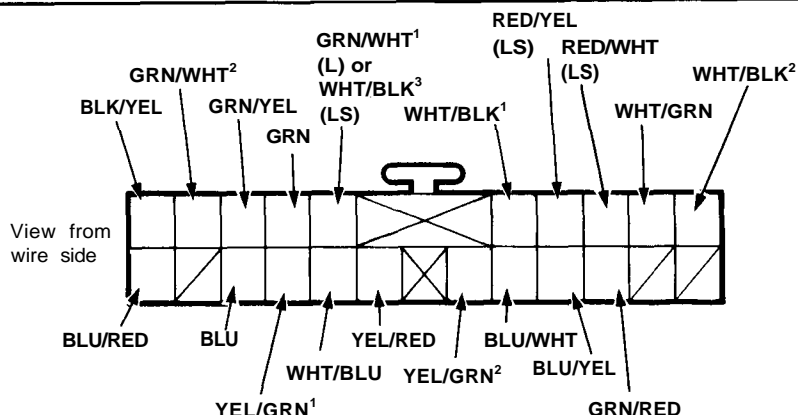
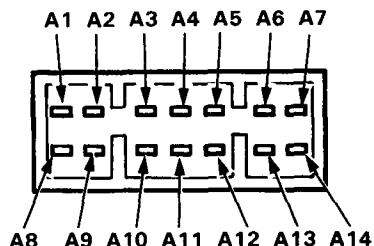
Intermittent Wiper System:

No.	Wire/ Terminal	Test condition	Test: Desired result	Possible cause if result is not obtained
1	BLU/RED	Ignition switch ON (II)	Check for voltage to ground: There should be battery voltage.	<ul style="list-style-type: none"> • Blown No. 23 (7.5 A) fuse • Faulty wiper intermittent relay • An open in the wire
2	GRN	Ignition switch ON (II) and wiper switch at INT position	Check for voltage to ground: There should be battery voltage.	<ul style="list-style-type: none"> • Blown No. 23 (7.5 A) fuse • Faulty wiper switch • An open in the wire
3	BLK/YEL	Ignition switch ON (II) and washer switch pushed	Check for voltage to ground: There should be battery voltage.	<ul style="list-style-type: none"> • Blown No. 23 (7.5 A) fuse • Faulty washer switch • An open in the wire
4	GRN/YEL GRN/WHT ²	Intermittent dwell time control ring turned	Check for resistance between the terminals: It should vary from 0 Ω to 30 k Ω as the ring is turned.	<ul style="list-style-type: none"> • Faulty intermittent dwell time controller • An open in the wire
5	A9	Ignition switch ON (II) and wiper switch OFF	Check for voltage to ground: There should be battery voltage.	<ul style="list-style-type: none"> • Blown No. 26 (30 A) fuse • Faulty wiper motor (automatic-stop circuit) • An open in the wire

(cont'd)

Integrated Control Unit

Input Test (cont'd)



Entry Light Control System:

No.	Terminal/ Wire	Test condition	Test: Desired result	Possible cause if result is not obtained
1	A11	Driver's door open	Check for continuity to ground: There should be continuity. NOTE: Before testing, remove No. 57 (15 A) fuse.	<ul style="list-style-type: none"> Faulty door switch An open in the wire
	GRN/RED	Passenger's door open		
2	BLU/WHT	Ignition key inserted all the way into the ignition switch	Check for voltage to ground: There should be 1 V or less.	<ul style="list-style-type: none"> Faulty ignition key switch Poor ground (G301, G302, G303) An open in the wire
3	WHT/BLK ¹	Under all conditions	Attach to ground: Left and right (LS) foot well lights should come on.	<ul style="list-style-type: none"> Blown No. 57 (15 A) fuse Blown bulb An open in the wire
4	WHT/BLK ²	Under all conditions	Attach to ground: Ignition key light should come on.	<ul style="list-style-type: none"> Blown No. 57 (15 A) fuse Blown bulb An open in the wire
5	WHT/BLK ³ (LS)	Under all conditions	Attach to ground: Front courtesy lights should come on.	<ul style="list-style-type: none"> Blown No. 57 (15 A) fuse Blown bulb An open in the wire
6	GRN/WHT ¹ (L)	Ceiling light switch in DOOR	Attach to ground: Ceiling lights, front courtesy lights should come on.	<ul style="list-style-type: none"> Blown No. 57 (15 A) fuse Blown bulb Faulty ceiling light relay An open in the wire
7	A10 (LS)	Ceiling light switch in DOOR	Attach to ground: Ceiling lights should come on.	<ul style="list-style-type: none"> Blown No. 57 (15 A) fuse Blown bulb An open in the wire
8	RED/WHT (LS)	Courtesy light controller ring turned	Check for resistance between the terminals: It should vary from 0 Ω to 20 k Ω as the ring is turned.	<ul style="list-style-type: none"> Faulty courtesy light controller An open in the wire
	RED/YEL (LS)			
9	WHT/GRN	Under all conditions	Attach to ground: Driver's door key cylinder light should come on.	<ul style="list-style-type: none"> Blown No. 57 (15 A) fuse Blown LED An open in the wire
10	YEL/GRN ¹	Driver's door outside handle pulled	Check for voltage to ground: There should be 1 V or less.	<ul style="list-style-type: none"> Faulty driver's door outside handle switch Poor ground (G301, G302, G303) An open in the wire
11	A6	Combination light switch to ON	Check for voltage to ground: There should be battery voltage.	<ul style="list-style-type: none"> Blown No. 49 (15 A) fuse Faulty combination light switch Faulty taillight relay An open in the wire